

BANK/BATTERIE C100 SERIES

___ KVARs, ___ VOLTS

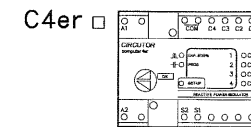
___ X ___ KVARs

NEMA: ___ *Kg/Lbs: 160/300

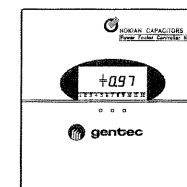
DIM: "H" X 720 X 410mm
(H"x 28.5"x 16")

*POIDS MAXIMUM WEIGHT

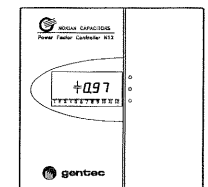
KVAR	HEIGHT = H = HAUTEUR					
	480V		600V		750V	
	mm	"	mm	"	mm	"
30	---	---	---	---	1140	44.9
40	1140	44.9	1140	44.9	1240	48.8
50	1140	44.9	1240	48.8	1240	48.8
60	1240	48.8	1240	48.8	1340	52.8



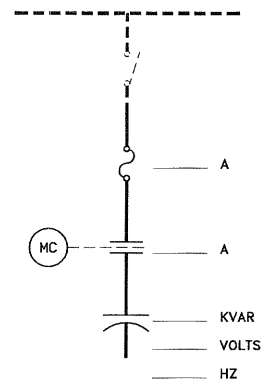
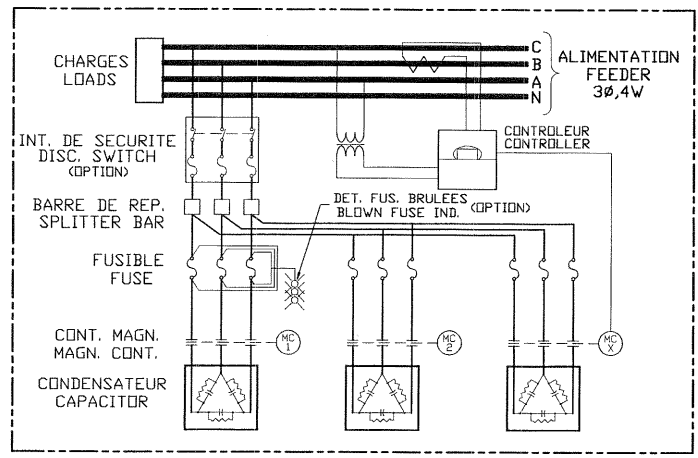
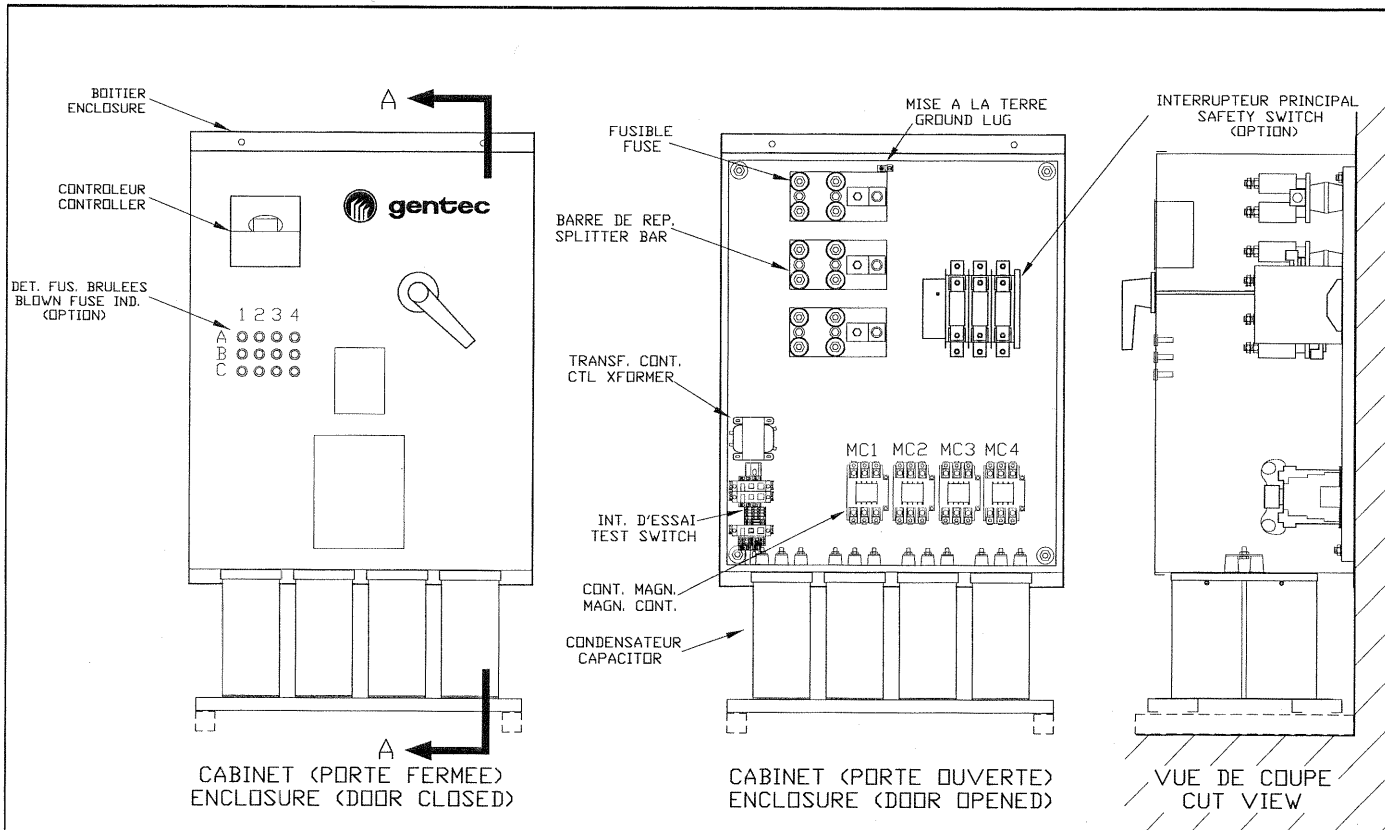
NC12 □



N12 □



CONTROLEUR / CONTROLLER



CLIENT/CUSTOMER	REF.	REVISION	DATE	✓
COM/P.O.#	TOLERANCE			
DOSSIER/FILE	DEC. t ±			
	FRAC. t ±			
<input type="checkbox"/> INFORMATION	✓	BATTERIE AUTOMATIQUE 4 UNITES INT.		
<input type="checkbox"/> APPROBATION	✓	PRESENTATION GENERALE		
<input type="checkbox"/> PRELIMINAIRE	F-M Simard		AUTOMATIC BANK 4 INT. UNITS ENCL	
<input type="checkbox"/> SOUMISSION	DATE 2007/02/16	GENERAL PRESENTATION		
<input type="checkbox"/> AUTRE	SK-6050		A4	