

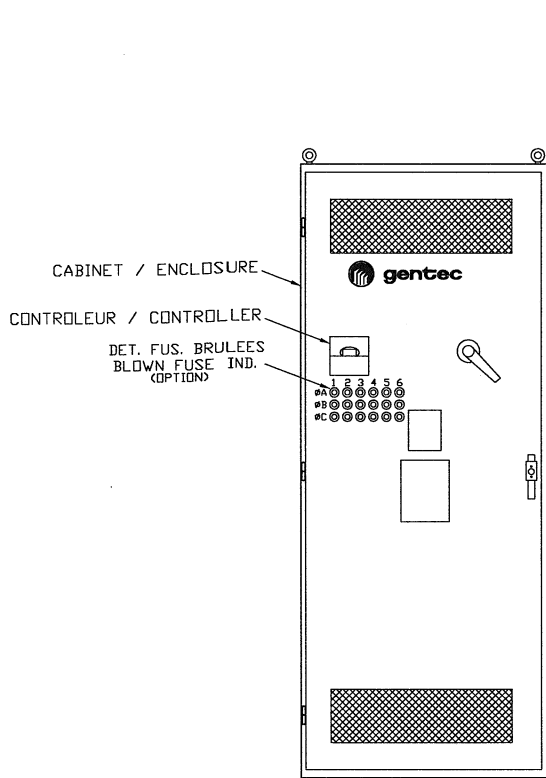
BANK/BATTERIE C100 SERIES

_____ KVARs, _____ VOLTS

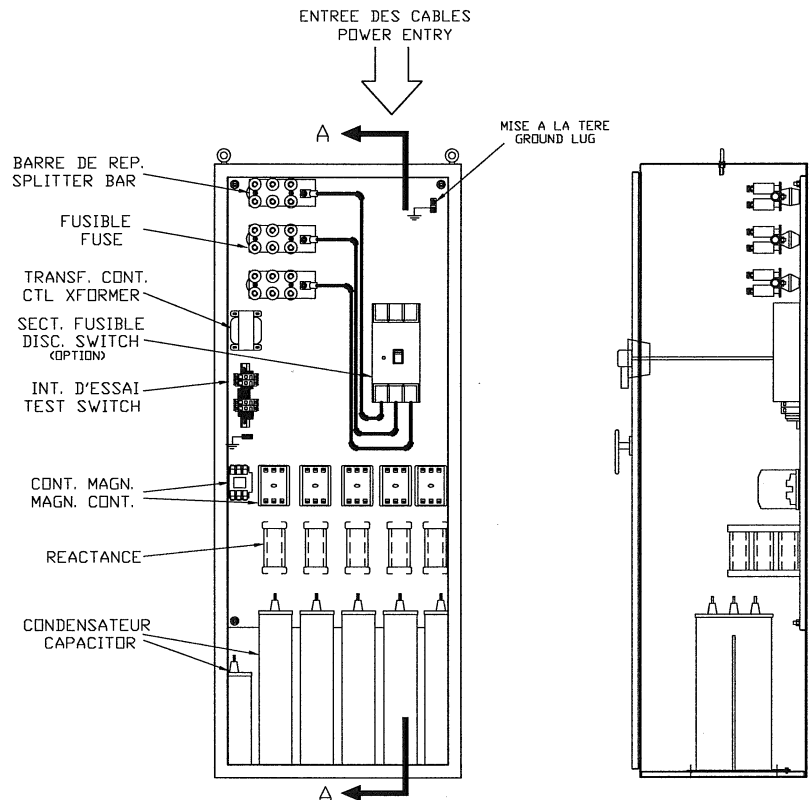
___ X ___ KVARs

NEMA: __ 450Kg / 1000 Lbs

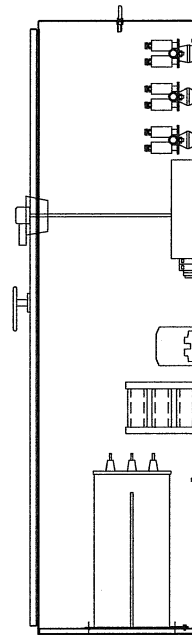
DIMENSIONS: 2280x915x610mm
(90"x36"x24")



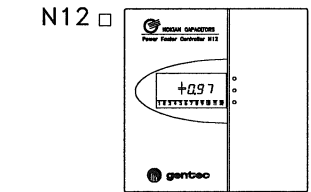
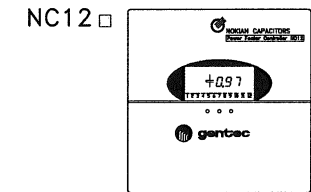
CABINET (PORTE FERMEE)
ENCLOSURE (DOOR CLOSED)



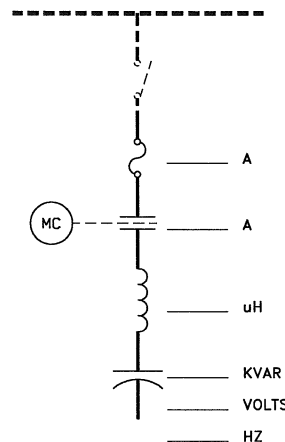
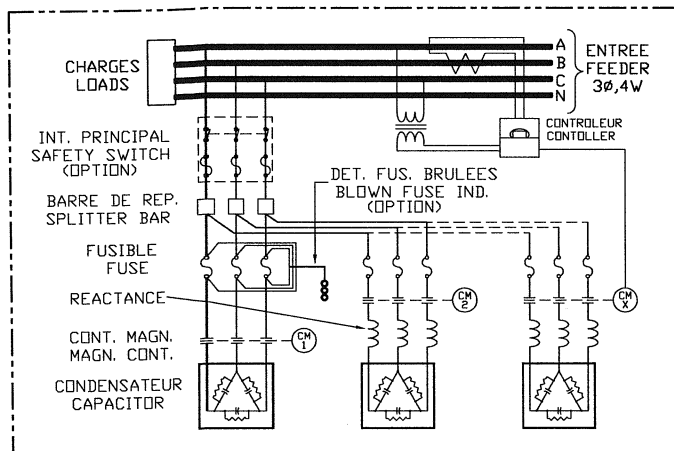
CABINET (PORTE OUVERTE)
ENCLOSURE (DOOR OPENED)



VUE DE COUPE
CUT VIEW



CONTROLEUR / CONTROLLER



PROJ.#	REF.	REVISION	DATE	✓
COM/P.O.#	TOLERANCE			
<input type="checkbox"/> INFORMATION <input type="checkbox"/> APPROBATION APPROVAL <input type="checkbox"/> PRELIMINAIRE PRELIMINARY <input type="checkbox"/> SOUMISSION QUOTATION <input type="checkbox"/> AUTRE OTHER	DEC. t ± ---	 PRESENTATION GENERALE CAB. DE CONDENSATEURS 90"x 36" GENERAL PRESENTATION CONTROLLED CAPACITORS 90"x 36" CAB.		
	FRAC. t ±			
	ANGLE T ±			
	√ ---			
PROJECTION	DATE 2005/07/28	SK-3205		
		A4		