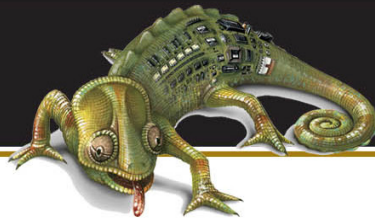




gentec



kameleon™
ADAPTABILITY IN LIGHTING CONTROL

Overview

The Gentec Contact Input Interface offers four inputs to interface with third-party devices and control systems. Each input has two terminals (+5 V, Input) for interfacing with almost any equipment creating a hybrid control solution.

When the two terminals are bridged through an external dry contact, the input triggers transmission of a telegram based on standard profiles (EEP).

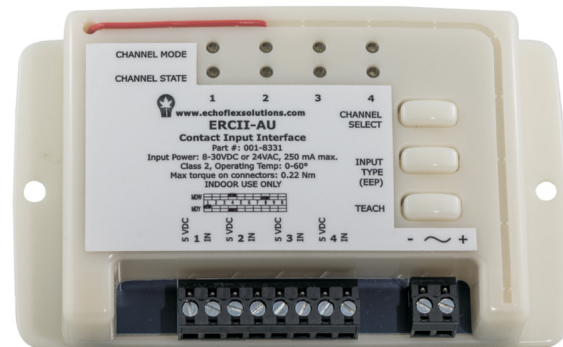
Supported EEP's include:

- Key card Activated Switch
- Rocker Switch
- Occupancy Sensor
- Window/Door Contact

Each channel can then be linked to the same or different receivers so when the input is activated, a wireless telegram is sent representing the input's state.

The Contact Input Interface is the easiest method of integrating wireless devices into existing panels, wired control systems, or energy management systems.

Panic scenarios that may include a lock-down, fire alarm or security breach can now access the distributed lighting controls and force lights on. Integrate the interface with existing control systems to deliver time-of-day scheduled events to the wireless controllers allowing you to stay with a single front-end solution.



Features

- Four input channels
- Each channel operates separately sending switch or sensor commands to Gentec controllers
- Low voltage interface to fire alarm, security, lighting, or control panels
- Easy integration into any Energy Management system
- Doubles as a repeater
- Panel or DIN rail mount for tidy mounting applications
- LED interface for channel status indication
- Pluggable terminal strips
- Supports key card switch, rocker switch, occupancy sensor and window switch profiles

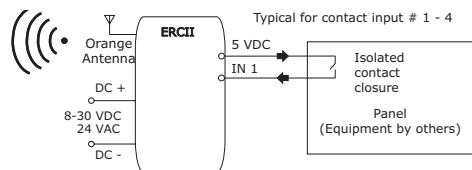
Listing and Compliance

Radio Frequency (902 MHz)

FCC Part 15.231 – Remote Control Transmitter
IC RSS-210



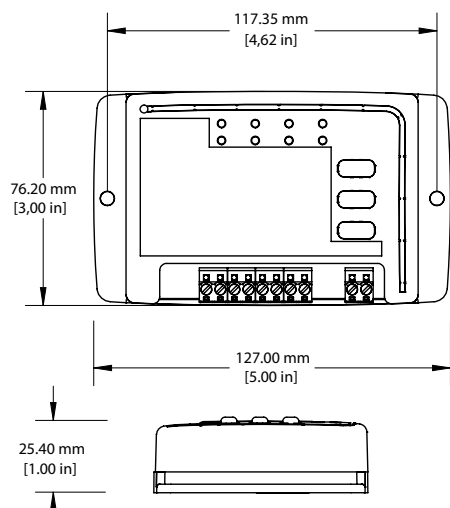
Wiring Diagram



Equipment Profiles – Transmits

EEP: F6-02-02	Switch
EEP: F6-04-01	Key Card Switch
EEP: A5-07-01	Occupancy Sensor
EEP: A5-30-02	Window/Door Contact

Dimensional Diagram



Hardware Specifications

Power Supply	8–30 VDC or 24 VAC power input, 250 mA maximum draw
Inputs	Three buttons: Channel Select, EEP Select, Teach Four +5 V input channels
Outputs	Two bi-color LEDs per channel: Channel Mode, Channel State

Communications

Radio Frequency	902 MHz
Antenna	Whip
Transmission Range	24 m (80 ft): commercial office spaces (typical), up to 100 m (330 ft) line of sight

Mechanical Specifications

Operating Temperature	–10 °C to 45 °C (14 °F to 113 °F)
Relative Humidity	5 % to 95 % non-condensing
Weight	111 g (3.9 oz)
Dimensions	76.2 x 127 x 27 mm (3 x 5 x 1 in)
Mounting	Two screws (not included)

Ordering Information

Description	902 MHz Model	Gentec Part Number
Input Contact Interface	ERCII-AU-LV	29706

Specifications are subject to change without notification.