

Pole-Mounted 2.4kV through 34.5kV Fixed or Switched Applications

Gentec Inc. offers economical pole-mounted capacitor products up to 4800 KVAR. Lightweight and sturdy aluminum welded construction provides for 3 and 6 units arrangements.

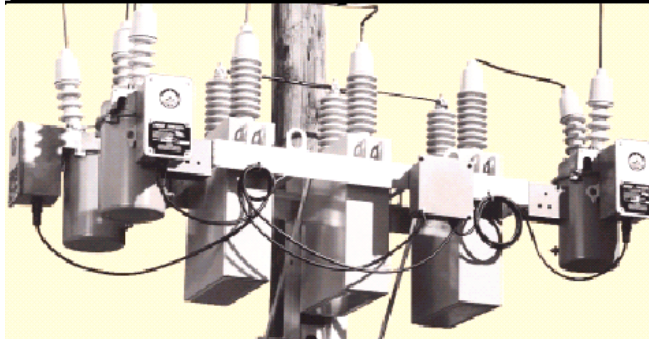
Pole-mounted capacitors accommodate fixed or switched requirements, with 50, 100, 150, 200, 300 or 600 KVAR capacitors in a single-line configuration. These “clean profile” systems make overall handling and installation simpler and easier.

Single-phase capacitors are of the all-film dielectric type, with non-PCB fluid. Units are available with one or two bushings, rated from 2.4kV through 34.5kV at 95kV, 125KV, 150V BIL. Capacitors meet applicable ANSI, IEEE and IEC standards.

When required, single-phase oil or vacuum switches are available for switching the capacitors. The switches provide continuous performance with minimal maintenance. A potential transformer can also be furnished, along with surge arrestors for the rack. A weatherproof aluminum junction box, for control, is included for switched applications.

Pole-mounted units are assembled and pre-wired using #2 insulated copper wire, with a ground lug. Lifting eyes are conveniently located to better facilitate handling of the rack. All pole-mounted units are factory tested and ready for installation and service.

Pole-Mounted Capacitor Racks



- Sturdy, Lightweight Aluminum or Galvanized steel Construction
- Quick Installation
- 95, 125 and 150 kV BIL Ratings
- Pre-assembled & Wired at Factory
Factory Tested Ready for Service

Pole-Mounted Auto VAR Control



Pole-Mounted Capacitors

Capacitor Arrangements

Rack Size	KVAR					
	50	100	150	200	300	400
3-Unit	150	300	450	600	900	1200
6-Unit	150	600	900	1200	1800	2400
9-Unit	---	900	1350	1800	2700	3600
12-Unit	---	---	---	2400	3600	4800

System Voltage (line-to-line) _____

KVAR Total _____

Capacitor Unit KVAR _____

BIL Rating _____

Fixed or Switched _____

Electrical Connection
(Grounded Wye, Ungrounded Wye, Delta) _____

Capacitor Bushings (1 or 2) _____

Transformer (120VAC CPT) _____

Surge Arrestor/Rating/Type _____

Pole Base (for storage) _____

Bird Guards _____

Vacuum Switch or
(Replaces Oil Switch) _____

Bushing Creep Requirements _____

Switched Arrangements

Rack Size	KVAR					
	50	100	150	200	300	400
3-Unit	255	335	400	465	670	750
6-Unit	380	510	640	770	1145	1250
9-Unit	---	700	885	1075	1625	1980
12-Unit	---	---	---	1380	2070	2400

Subtract 130lbs. for fixed arrangement from above weights.
Additional bracing included with 9- and 12- unit arrangements.

Aluminium Pole-Mounted
and

Galvanized Pole-Mounted
Capacitor Rack

Typical 6-unit with Switch Mounting Provisions

Frame Size	Dimension
3-Unit	29 x 17 x 36
6-Unit	53 x 17 x 36
9-Unit	Contact Factory
12-Unit	Contact Factory

Consult factory for three-phase, internally fused, CSA rated capacitors, special applications, and galvanized type racks.
Consult factory for applications above 15kV and group fusing of racks