

MEDIUM VOLTAGE
METAL ENCLOSED CAPACITOR BANK

- C1000 SERIES
- FT1000 SERIES
- FT2000 SERIES

_____ KVAR, ___ KV, 3Ø

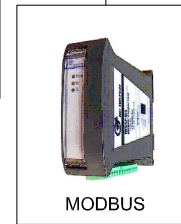
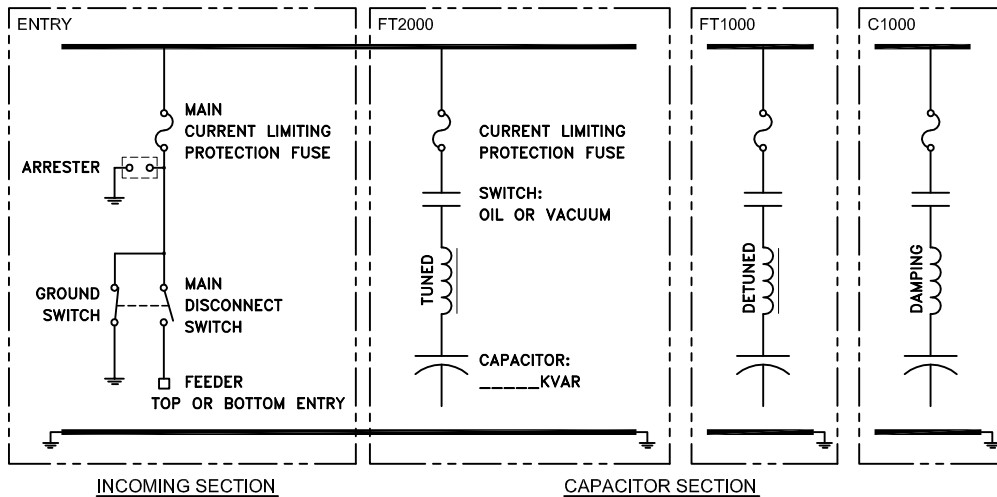
_____ STEPS OF _____ KVAR

_____ STEPS OF _____ KVAR

- GENERAL:**
- AUTOMATIC BANK CONFIGURATION
 - SYSTEM VOLTAGE: FROM 7.2 TO 15 KV
 - FREQUENCY: 50 OR 60Hz
 - INDOOR OR OUTDOOR INSTALLATION
 - INSULATION LEVEL: 95 kV BIL
 - SHORT CIRCUIT CURRENT: UP TO 50 KA
 - CONSTRUCTION STANDARD: CSA-UL

- EQUIPPED WITH:**
- CAPACITOR (SINGLE PHASE UNIT)
WITH INTERNAL OR EXTERNAL FUSE PROTECTION
 - REACTOR
DAMPING RATED AT 135%
TUNED OR DETUNED AT 165%
 - SWITCH
15 KV CLASS 95 kV BIL
1 OR 3 POLES, VACUUM OR OIL TYPE
 - ZERO VOLTAGE CLOSING SYSTEM (ZVC)
 - GROUND SWITCH AND MAIN DISCONNECT
3 POLES + INTERLOCKED SYSTEM
 - ENCLOSURE [A]=1UN [B]=2UN [C]=1+2UN [D]...
TYPE 1 OR 3R GALVANNEALED STEEL WELDED
ASA 61 GREY PAINTED
MECHANICAL KEY INTERLOCKS
FLUSHMOUNT DOOR ASSEMBLY
OUTSIDE REMOVABLE FILTERS
GROUND PAD
 - POWER FACTOR CONTROLLER (NC12)
 - MODBUS
 - TINNED COPPER BUS BAR
 - UNBALANCE SYSTEM PROTECTION
 - ARRESTOR (DISTRIBUTION CLASS)
 - CONTROL BOX
- STANDARD OPTION

ONLINE DIAGRAM



DIMENSIONS			
HIGH	WIDTH	DEPTH	UNITS
95		42	Inches
2413		1066	mm



REF.	REVISION	DATE	VER	APP
TOLERANCE				
DEC.	±			
FRAC.	±			
ANGLE	±	GENERAL LAYOUT		
APP.	15 KV			
VER.	CAPACITOR BANK			
DATE	2011/02/11	SK-6416		A
SCALE	1=40			