

**MEDIUM VOLTAGE  
METAL ENCLOSED CAPACITOR BANK**

- C1000 SERIES
- FT1000 SERIES
- FT2000 SERIES

\_\_\_\_\_ KVAR, \_\_\_ KV, 3Ø  
 \_\_\_\_\_ STEPS OF \_\_\_\_\_ KVAR  
 \_\_\_\_\_ STEPS OF \_\_\_\_\_ KVAR

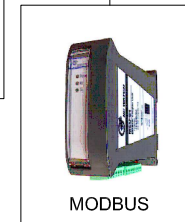
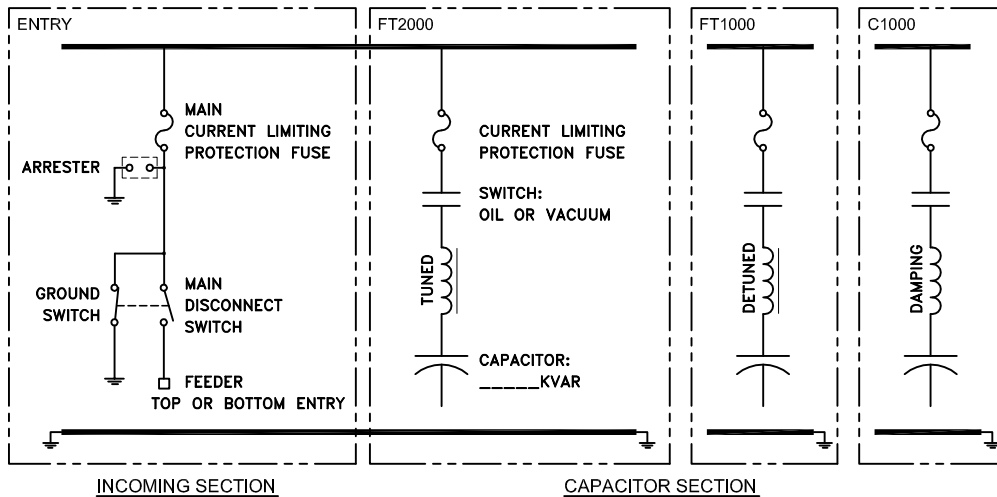
**GENERAL:**

- AUTOMATIC BANK CONFIGURATION
- SYSTEM VOLTAGE: FROM 15.5 TO 25 KV
- FREQUENCY: 50 OR 60Hz
- INDOOR OR OUTDOOR INSTALLATION
- INSULATION LEVEL: 125 TO 150 KV BIL
- SHORT CIRCUIT CURRENT: UP TO 50 KA
- CONSTRUCTION STANDARD: CSA-UL

**EQUIPPED WITH:**

- CAPACITOR ( SINGLE PHASE UNIT)  
WITH INTERNAL OR EXTERNAL FUSE PROTECTION
- REACTOR  
DAMPING RATED AT 135%  
TUNED OR DETUNED AT 165%
- SWITCH  
25 KV CLASS 125 OR 150 KV BIL  
1 OR 3 POLES, VACUUM OR OIL TYPE
- ZERO VOLTAGE CLOSING SYSTEM (ZVC)
- GROUND SWITCH AND MAIN DISCONNECT  
3 POLES + INTERLOCKED SYSTEM
- ENCLOSURE [A]=1UN [B]=2UN [C]=1+2UN [D]...  
TYPE 1 OR 3R GALVANNEALED STEEL WELDED  
ASA 61 GREY PAINTED  
MECHANICAL KEY INTERLOCKS  
FLUSHMOUNT DOOR ASSEMBLY  
OUTSIDE REMOVABLE FILTERS  
GROUND PAD
- POWER FACTOR CONTROLLER ( NC12)
- MODBUS
- TINNED COPPER BUS BAR
- UNBALANCE SYSTEM PROTECTION
- ARRESTOR (DISTRIBUTION CLASS)
- CONTROL BOX
- STANDARD  OPTION

**ONLINE DIAGRAM**



DIMENSIONS			
HIGH	WIDTH	DEPTH	UNITS
100		48	Inches
2540		1220	mm



REF.	REVISION	DATE	VER	APP										
<table border="1"> <tr> <td colspan="2">TOLERANCE</td> <td rowspan="3"> </td> </tr> <tr> <td>DEC.</td> <td>±</td> </tr> <tr> <td>FRAC.</td> <td>±</td> </tr> <tr> <td>ANGLE</td> <td>±</td> <td></td> </tr> </table>					TOLERANCE			DEC.	±	FRAC.	±	ANGLE	±	
TOLERANCE														
DEC.	±													
FRAC.	±													
ANGLE	±													
APP.		GENERAL LAYOUT												
VER.		25 KV												
		CAPACITOR BANK												
DATE 2011/02/11		SK-6417		A										
1=40														